

isocheck™

Barrier Mat Systems for Floors & Walls



AIRBORNE IMPROVEMENT SYSTEMS FOR TIMBER FLOORS & WALLS

- Refurbishments
- Conversions
- Listed buildings requiring minimal structural change



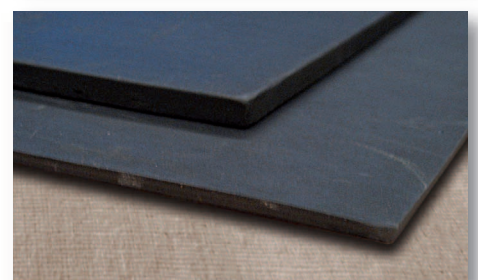
Taking the *mystery* out of Acoustics

DESCRIPTION

- ❑ Isocheck weight-enhanced Barrier Mat systems are primarily used for their airborne, low-frequency damping properties in floors and walls through timber floors.
- ❑ Isocheck Barrier Mat 5kg and Isocheck Barrier Mat 10kg are constructed of high-density barium sulphate loaded thermoplastic polymer, plasticized with phthalate esters and containing mineral fillers. They are black in colour, bitumen free, ecologically neutral and recyclable.
- ❑ Barrier Mats are ideal for upgrades when looking to improve airborne sound reduction with minimal increase in height and depth within floors and walls.

APPLICATIONS

- ❑ Can be laid directly over existing floorboards or draped between joists in floors or sandwiched between two sheets of plasterboard or draped within a studwork wall.



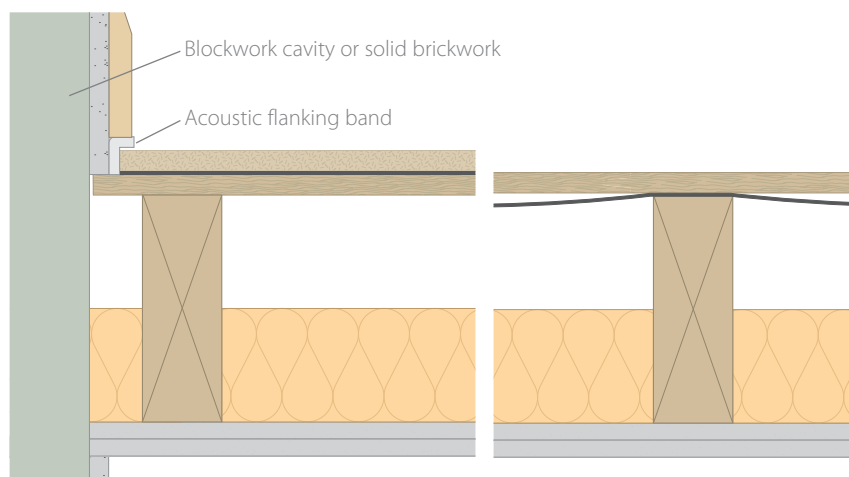
Product data

Overall size:	Isocheck Barrier Mat 5	1.2m x 2.0m
	Isocheck Barrier Mat 10	1.2m x 5.0m
Thickness:	Isocheck Barrier Mat 5	2 - 3mm
	Isocheck Barrier Mat 10	4 - 5mm
Weight:	Isocheck Barrier Mat 5	5.0kg/m ²
	Isocheck Barrier Mat 10	10.0kg/m ²

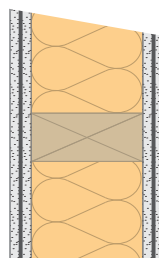
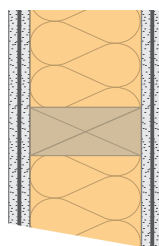
Performance

Isocheck Barrier Mats contain a high performance material that has been acoustically tested at a UKAS certified independent test laboratory.

Tested and Rated according to: BS EN ISO 717-1:2013
BS EN ISO 10140-1:2016
BS EN ISO 10140:2010



- ❑ Timber floor finish.
- ❑ Isocheck Barrier Mat 5 or 10 over existing floorboards (top left detail) **or**
- ❑ Isocheck Barrier Mat 5 or 10 draped between joists (top right detail).
- ❑ 200mm x 70mm timber joists @ 450mm centres.
- ❑ 100mm 45Kg/m³ insulation between joists (total ceiling mass 20kg/m²).
- ❑ 25mm double boarded ceiling fixed to timber joists.
- ❑ Acoustic flanking band reduces impact vibration leaking via structural walls and assists in reducing airborne sound paths (on both constructions).



In timber walls the Barrier Mat can be sandwiched between two sheets of plasterboard (right detail).

Every effort has been taken in the preparation of this sheet to ensure the accuracy of representations contained herein. Recommendations as to the use of materials, construction details and methods of installation are given in good faith and relate to typical situations. However, every site has different characteristics and reliance should not be placed upon the foregoing recommendations. Advice can be given as to specific applications of the products, upon request to isomass building products.

SPECIFICATION

The acoustic floor shall be:

- ❑ Isocheck Barrier Mat, supplied by Isomass Ltd. Unit 14 Papworth Business Park, Stirling Way, Papworth Everard, Cambridgeshire CB23 3GY and installed in accordance with manufacturer's instructions / recommendations.

INSTALLATION

- ❑ Two to three layers glued onto timber floors will dramatically reduce airborne noise penetrating the floor from below or airborne noise you are creating being transmitted from above.
- ❑ Barrier Mats can be fixed using pins, hangers or banding. Alternatively, it can be bonded using an approved polyurethane-based contact adhesive or a solvent-based acrylic pressure-sensitive adhesive.
- ❑ Finished timber floors should be isolated from the skirting using Isocheck Acoustic Flanking Band.
- ❑ Full installation instructions are available and must be used in conjunction when laying this system.

For advice on treatment of services and penetrations, consult our brochure or visit our website.

Please ask Isomass for guidance when considering the weight of any new blocks which will be incorporated in a wall directly surrounding a timber separating floor.