

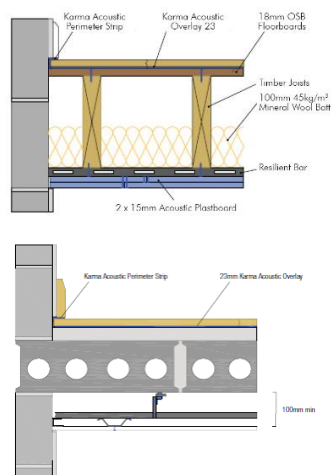
## TECHNICAL INFORMATION SHEET



**Karma Overlay 23** is a high performance acoustic floor panel with an exceptional performance to height ratio. Comprising an 18mm tongued and grooved 18mm P5 chipboard to a 5mm cross linked polyolefin foam resilient layer. Karma Overlay 23 provides excellent impact and airborne sound insulation in a single product. It is used on an existing floor, new ply or chipboard floor or directly to concrete/screed floors making it an ideal product for refurbishments and new build projects.

**Typical Applications** New build apartments, hotels, student accommodation and houses with timber joist floors (Pre-Completion Testing). Refurbishment projects where height restrictions exist but reliable performance is still required. This product can be used in the RD FFT5 floor options for E-FC-1, E-FC-2 or E-FS-1.

### TECHNICAL INFORMATION



Criteria Sound Insulation			
Criteria		Airborne DnT,w (dB)	Impact L'nT,w (dB)
Criteria Conversions		≥ 43	≤ 62
Criteria New Build		≥ 45	≤ 62
Floor Type	Construction Specification	Airborne dB Rw	Impact dB Ln,w
Timber	Karma Overlay 23, 18mm Chipboard, Timber Joists, RWA45 100mm, Resilient Bars, 2 x 15mm Acoustic Plasterboard	50 (+Ctr)	56
Timber	Karma Overlay 23, onto existing floor boards in staggered formation, perimeter sealed with flanking strip ceiling double boarded with Gyproc Soundbloc. In between were resilient bars and Rockwool RWA45 Slabs	52 (+Ctr)	57
Timber	Karma Overlay 23 onto existing floorboards, 200mm Timber Joists, 75mm RWA45. Resilient Bar, 1 x Plasterboard 15mm, 1 x Fireline 15mm	43 (+Ctr)	54
Timber	Karma Overlay 23 onto existing floorboards, 200mm Timber Joists, 75mm RWA45, Suspended Ceiling 300mm, 1 x Plasterboard 15mm, 1 x Fireline 15mm	58 (+Ctr)	37
Concrete	Karma Overlay 23, 40mm min. laid onto 150mm (min.) Precast Concrete Floor Plank Slab (300kg/m2 min.) Metal Ceiling 100mm (min.), One layer Plasterboard	50 (+Ctr)	56

### Benefits of Karma Overlay 23

- Excellent impact and airborne sound performance
- Minimal height increase
- Can be used with any floor finish
- Cost-effective solution
- Non load bearing partitions can be built off the finished floor surface
- Can be used on existing subfloors or concrete/screed floors
- Eliminates the requirement for a damp proof membrane
- Versatile – can be finished with all types of floor finish
- Tried and tested system
- Quick & Easy to install, offering savings labour

### Physical Information

- Dimensions: 2400mm x 600mm x 23mm
- Weight: 13.1kg/m2

### Accessories

- EVERBUILD WOOD 502 All Purpose Weatherproof Wood Adhesive
- Karma Acoustic Perimeter Strip

### Additional Information

- Part E – Has demonstrated compliance with Approved Document E (England & Wales)
- GWP <5 – Global Warming Potential of resilient layer
- Recycled – Product made recycled or recyclable materials

## Karma Overlay 23 Installation Instructions

### Preparation

#### Storage

All components should be kept inside, under cover and in dry conditions at all times. Panels should be stacked flat on a level surface. Materials should be located into the environment in which they are to be fixed at least 24 hours prior to fixing.

#### Subfloor Tolerances

The subfloor evenness tolerances must not exceed +/- 2mm per 2 metre run. The base floor must also be clean and completely dried out. The floor should be clear of pipes and other obstacles.

#### Partitions

Lightweight non load bearing partitions can be supported on top of Karma Overlay 23 boards.

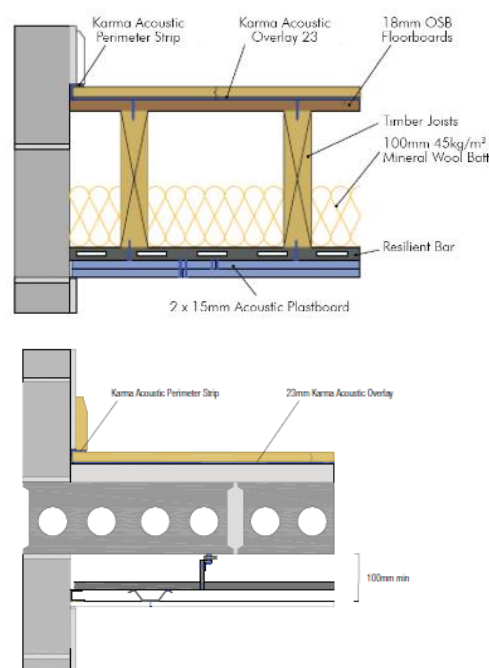
### Installation Procedure

- 1) Place Karma 5mm thick x 100mm wide flanking strip between Karma Overlay 23 and perimeter walls and existing door frames during installation. This will reduce flanking sound transmission.
- 2) Lay Karma Overlay 23 with the grooved edges or cut edges facing the perimeter walls. Use the off cut from the final panel in the first row to commence the next row. Do not start a row with an off cut less than 250mm long. Lay panels in a brick bonded fashion.
- 3) While laying boards apply a liberal amount of EVERBUILD WOOD 502 All Purpose Weatherproof Wood Adhesive to the grooves of the T&G joint and tightly butt the boards together. Wipe off excess adhesive with a damp cloth. Avoid walking on the boards until the adhesive has dried.

Expansion provision should be calculated at a rate of 2mm per metre run. This may be provided in a gap perimeter walls but intermediate expansion joints may be needed on long runs of flooring.

#### Tiling

The top surface of Overlay 23 should be primed before tiling. Ensure that a flexible tile adhesive and flexible grout compatible with the P5 chipboard top surface are used to accommodate the movement of the substrate.



#### Expansion Provision